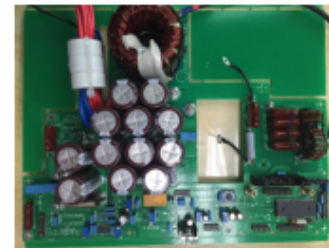
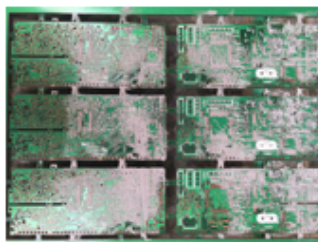


## SME800 Electric Stencil Cleaning Machine.



### APPLICATIONS :

Clean solder paste stencil;  
Clean red glue stencil, Resin mask, Copper mask;  
Clean misprinted PCB;  
Clean Big size PCBA.  
Clean squeegee.



## SME800 details -

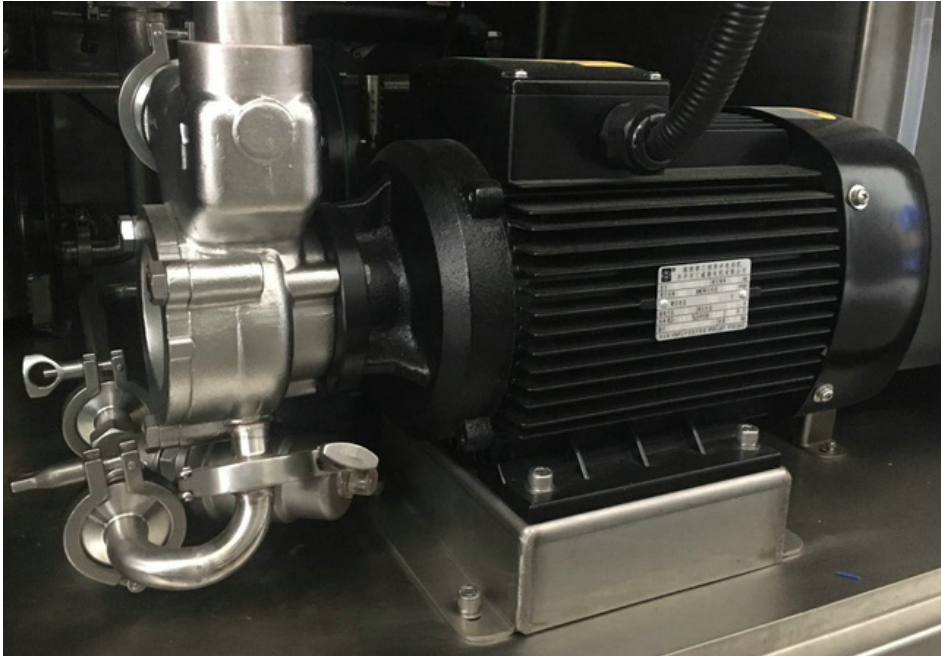
### The top stable cleaning mechanism.



**The stencil moves back and forth while  
4 spray rods and air knives are fixed. No  
soft liquid hose and air hose bend and  
frequently wear down.**

## SME800 details -

### Electric pump and air pump.



**High-quality Nan fang electric pump.**



**Ingersoll Rand air pump for liquid and water automatically adds and discharge.**

## SME800 details -

### Filters and liquid tanks.



**Clean and rinse systems are equipped with real-time filtering function, no solder paste ball goes back to stencil, misprints PCB and PCBA again together with liquids and water.**



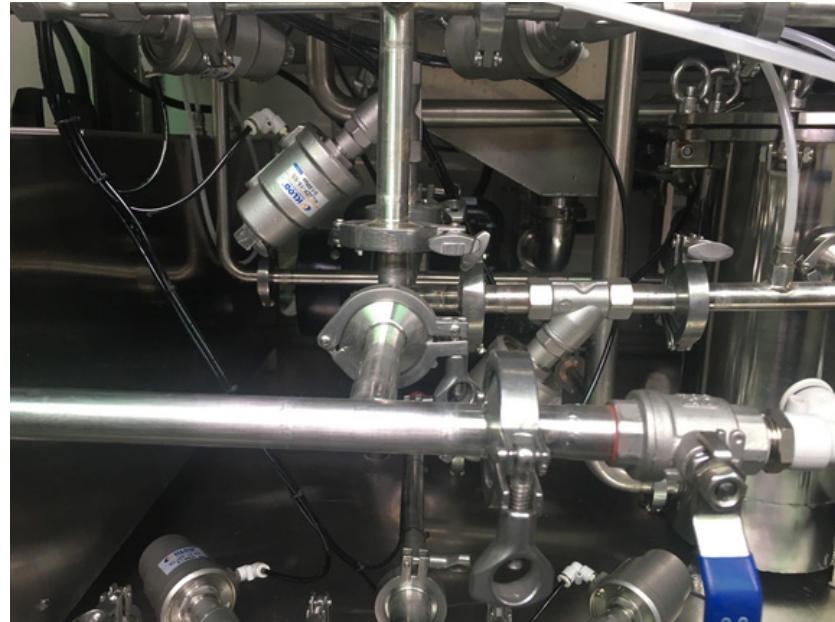
**Clean liquid tank and rinse water tank are equipped with heat and temperature control functions and 4-level liquid switches.**

## SME800 details -

### Air blower and pipe system.



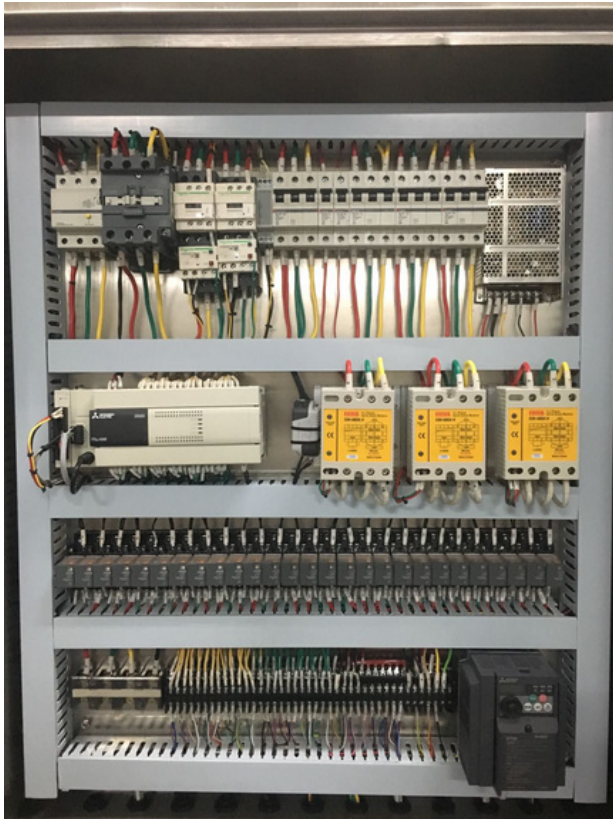
**4KW air blower, right for frequently start and shut off; high air rate can greatly reduce stencil dry time.**



**Total SUS304 liquid pipes, angle valves, no plastic hose, no need to worry about liquid press on the pipe.**

## SME800 details -

### Famous electric parts and reliable control system.



**Mitsui:** PLC, TP, Inverter, Module,  
Breaker, Leakage protection switch;

**Schneider:** Relay, AC Contactor,  
Thermal Relay;

**Omron:** Switching mode power  
supply, Sensor ;

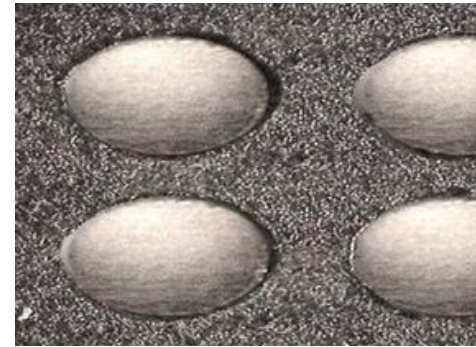
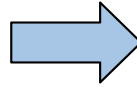
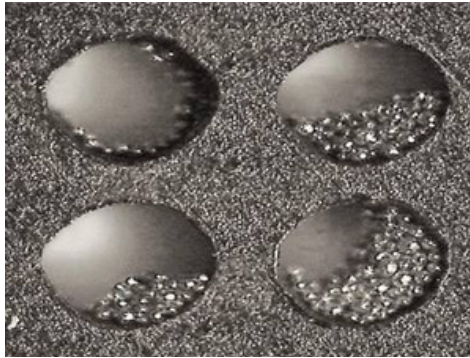
CKD solenoid valves; Fotek SSR;  
IDEC keys and Patlite indicator.

## SME800 Sample -

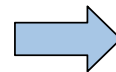
# Before

**Effectiveness of cleaning solder paste.**

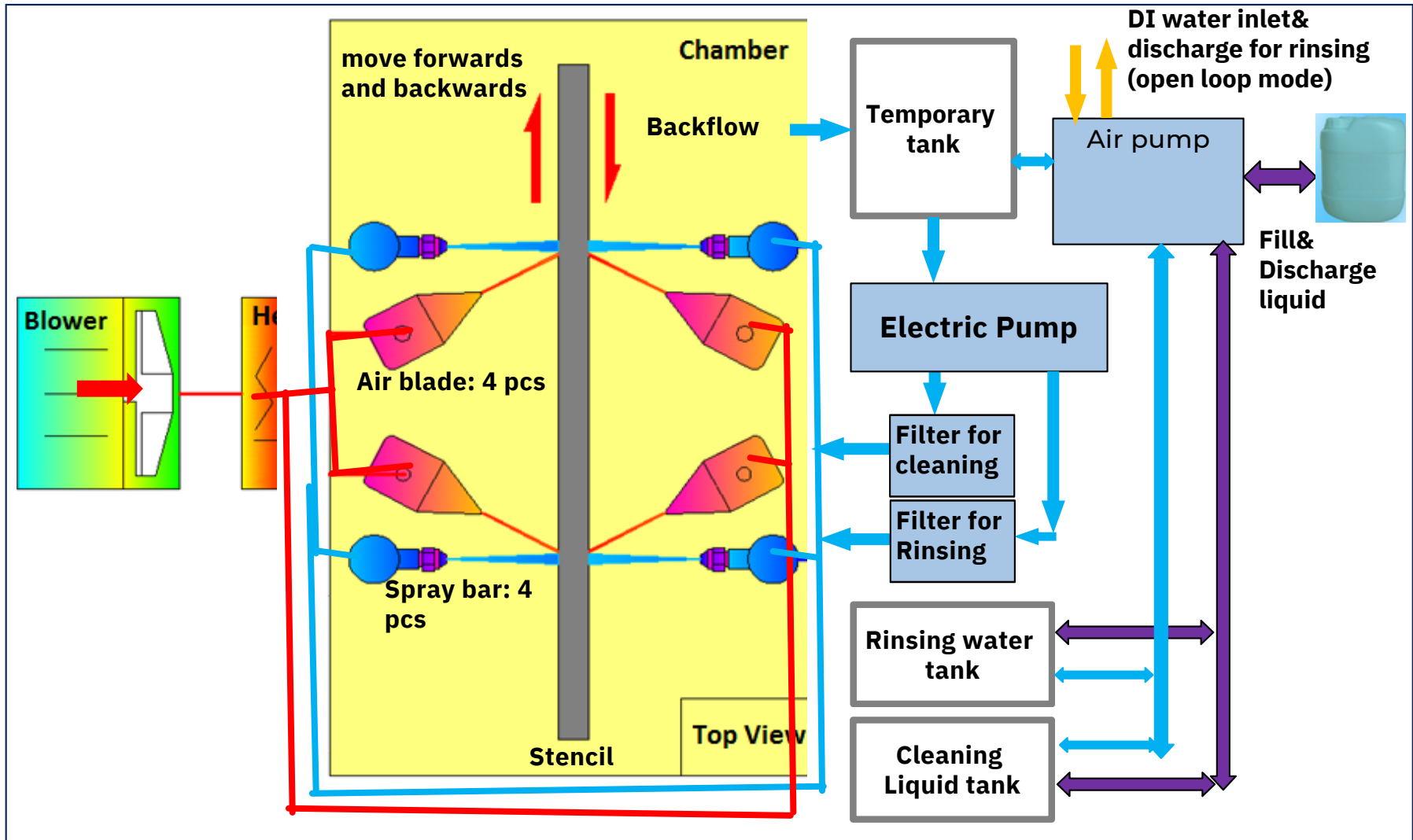
# After



**Effectiveness of cleaning red glue cooper mask.**

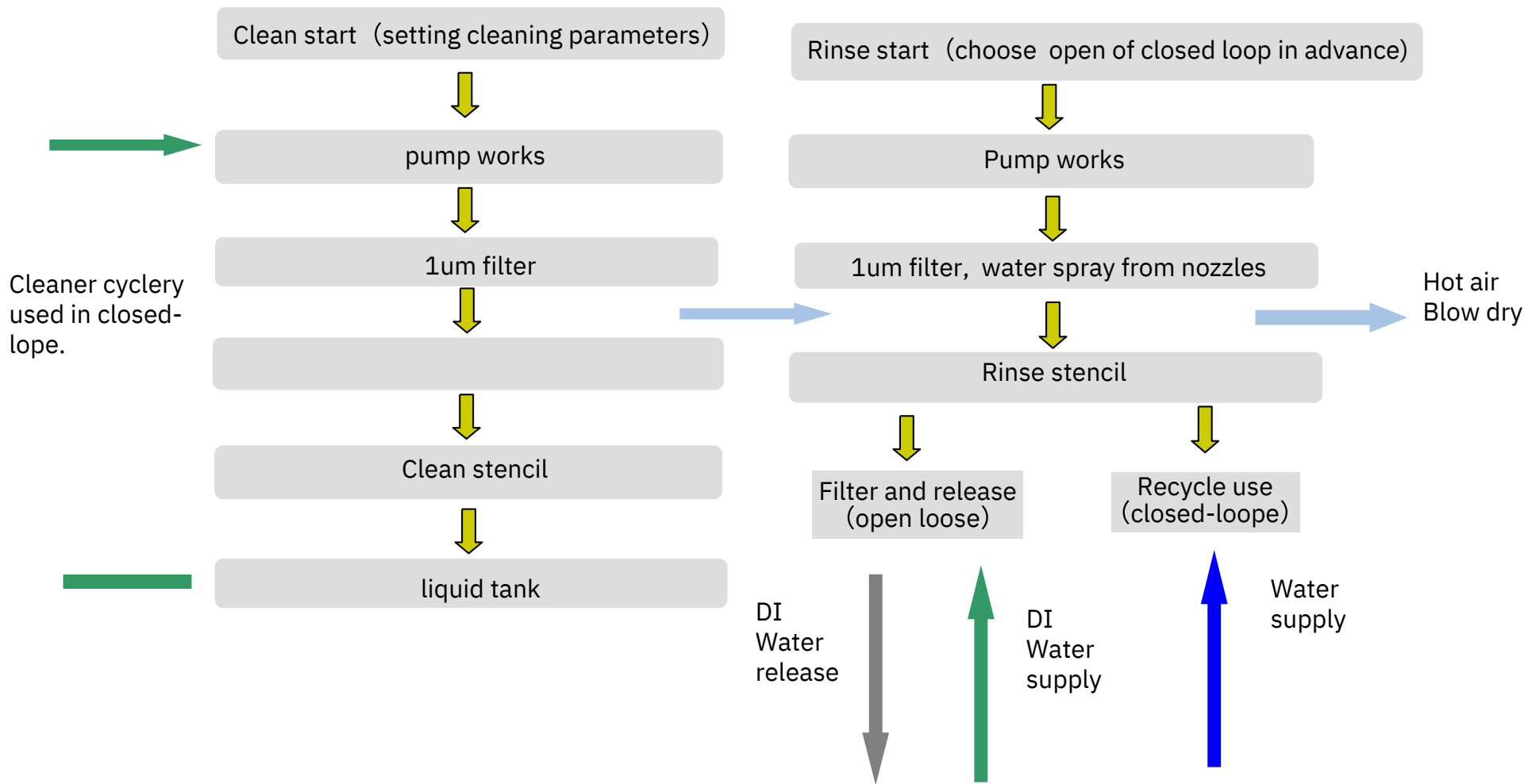


**SME800 Flow chart :**





**SME800 Flow chart :**



## SME800 Specification :

No.	Item	Specification	No.	Item	Specification
1	Stencil size	750mm(L) × 750mm(W) × 40mm(H) as max	15	Filter grade	1µm for cleaning, 1 µm for DI water
2	Cleaning agent	aqueous cleaning liquid for cleaning, DI or DM water for rinsing	16	DI water supply (open loop mode)	30~60 L/min (if not work in cyclic mode), ≤0.4mpa
3	Capacity of tank	60L max. ( liquid tank and water tank)	17	DI water supply (close loop mode)	N/A. DI water is running in cyclic pipe system. Discharge used water when conductivity is out of specification.
4	Way of cleaning	4 fixed spraying rods, Spray liquid , stencil moves forwards and backwards by motor	18	Electric pump	4HP stainless steel l pump
5	Way of rinsing	4 fixed spraying bards, spray DI water, stencil moves forwards and backwards by motors	19	Hot air blower	5.5 HP
6	Way of drying	4 hot air blades, blowing hot air	20	Cleaning liquid heater	9KW
7	Recommended cleaning time	2~5 minutes	21	Rinsing water heater	9KW
8	Recommended rinsing time	2~3 minutes	22	Dry heater	6KW
9	Recommended drying time	3~6 minutes	23	Total power	about 33KW, 13KW at average when working
10	Estimated full cycle time	12~15 minutes	24	Exhaust hose size	Φ123mm
11	Conductivity meter	0~18 Mega ohms)	25	Power inlet	380VAC, 3 Phase, 50HZ , 90A
12	Liquid or water heat temp	room temperature to 60oC	26	Air supply	0.45~0.7Mpa
13	Dry air heat temp	room temperature to 90oC	27	Weight	720KG
14	Noise	less than 70 dB	28	Dimension	1300mm(L) × 1400mm(W) × 1970mm(H)

## Other SMT Cleaning Machine :



**S-1688 Pneumatic stencil  
cleaning machine**



**Electric stencil  
cleaning machine**



**Fixture/Pallet cleaning  
machine**



**Mis-print PCB cleaning  
machine**



**Squeegee cleaning  
machine**



**Nozzle cleaning  
machine**

## Screen Cleaning Machine :



**General screen cleaning machine.**



**PCB green ink screen cleaning machine.**



**Water ink screen cleaning machine.**



**Screen auto developing machine.**



**Screen auto stripping machine .**



**Ink squeegee cleaning machine.**

## PCBA Cleaning Machine :



**PCBA offline cleaning  
Machine .**



**PCBA DI water in line  
cleaning machine .**



**PCBA in line cleaning  
machine .**



**PCBA in line cleaning machine .**



**DI water machine .**

## Best After-sales Service

- Worldwide Support
- Free Installation/ Training
- 1-day lead-time (spare parts)
- 1 Month customize a solution



## WELCOME INQUIRY

Please visit

[www.smthelp.com](http://www.smthelp.com)

Find us more

<https://www.facebook.com/autoinsertion>

Know more our team

<https://cn.linkedin.com/in/smtsupplier>

Welcome to our factory in Shenzhen China

See more machine working videos, please Youtube

[Auto Insertion](#)

Google

Auto+insertion, to get more informations

Looking forward to your email

[info@smthelp.com](mailto:info@smthelp.com)